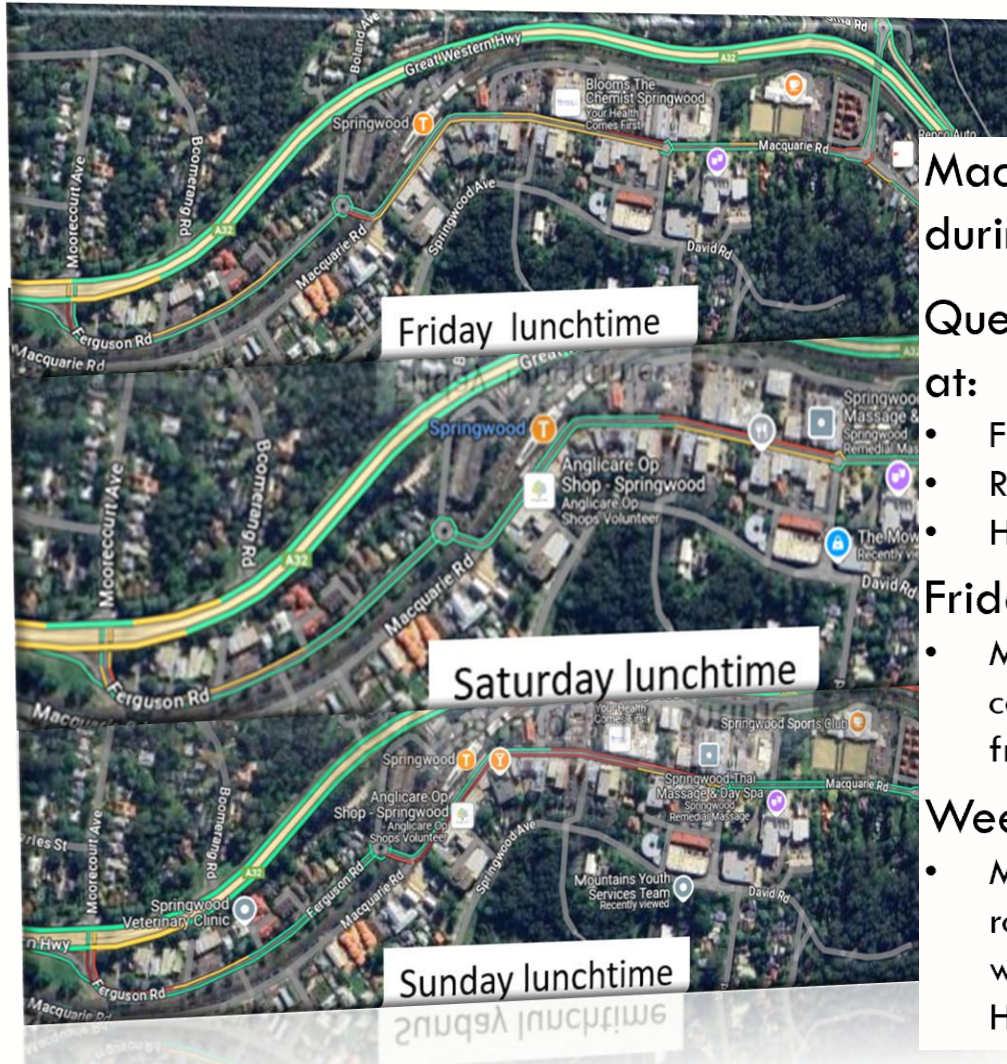


Springwood Woolworth DA Review

Traffic and Pedestrian Impacts



Traffic in Springwood



Macquarie Road most congested during lunchtime with friction due to:

Queues developing between roundabouts at:

- Ferguson Rd/Jerseywold Ave
- Raymond Road
- Hawkesbury Rd

Friday afternoon

- Macquarie Rd/Hawkesbury Rd roundabout can come under some pressure due to westbound traffic from highway travelling to Hawkesbury Rd

Weekday morning

- Macquarie Rd/Hawkesbury Rd roundabout causing rolling queues back towards the highway as westbound traffic being held up by Southbound Hawkesbury Rd movement.

Public Parking Spaces in Springwood



Woolworths DA – Traffic Report

- Supermarket GFA – 3490m² approx
 - Car Parking Spaces – 159 spaces (22 for hotel)
 - Anticipated peak operation – Saturday 11 am-12 pm
 - **410 car trips** in/out per hour
 - Plus **5** home delivery trips/hr
 - Plus **5** trips/hr for speciality retail
- } 12 Trips/ 100 sqm
- Split car park –basement car park 72 spaces (87 spaces on level 1) will be more attractive than assumed in DA (as travelators do not go to roof parking and Macquarie Street)
 - Traffic performance to LoS C on year of opening
 - Traffic Volumes assumed June (not peak month - April) traffic volumes – previous studies show volumes should be **increased by up to 20%** to better represent the peak month.
 - **Queue spill back effects not represented adequately with LOS C not necessarily representing traffic conditions on Macquarie Street**

David Rd – Peak Parking Demand



Proposed Basement Access Location – Peak Parking Demand

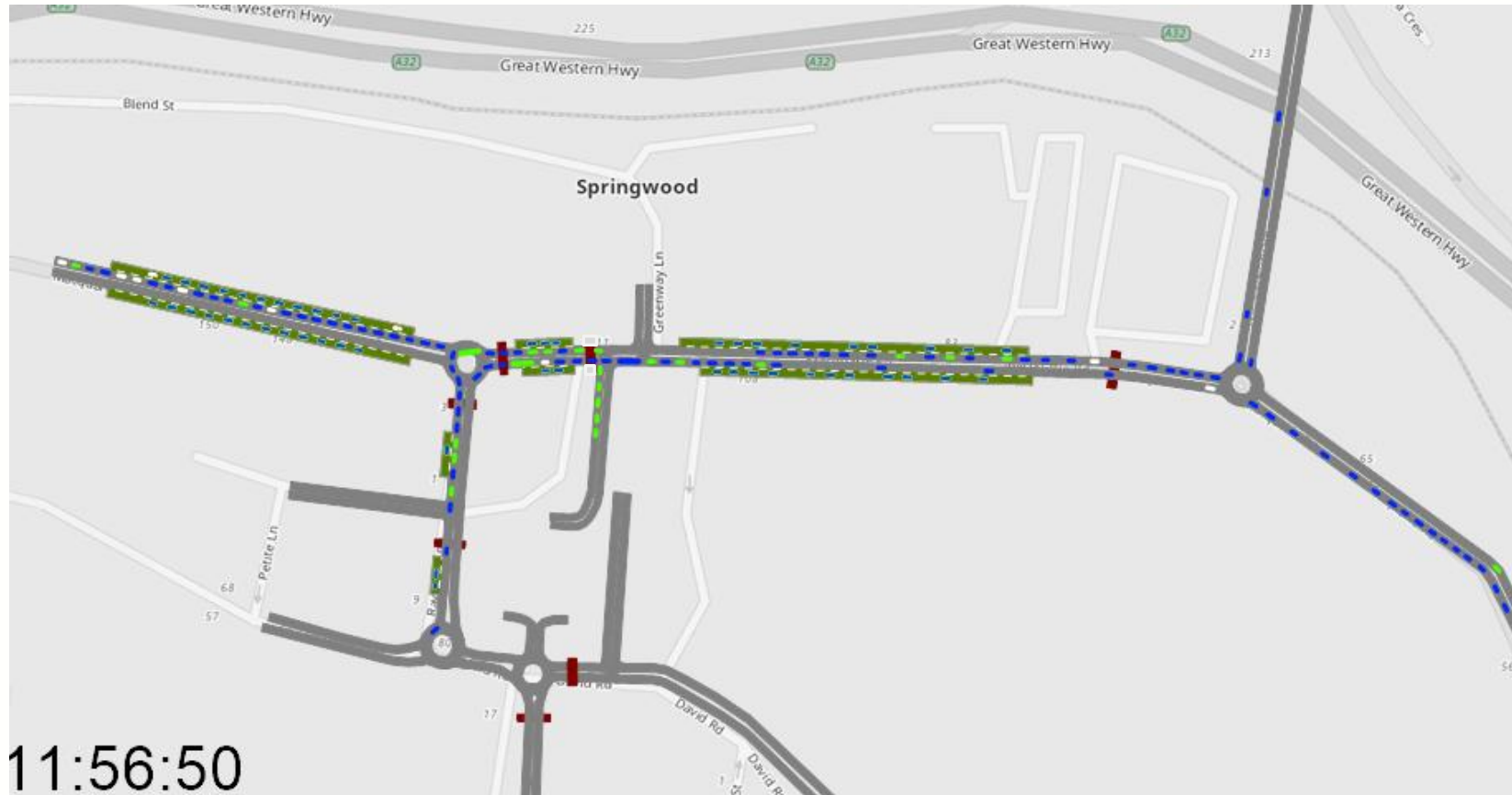


Key Issues

- DA traffic assessments using volumes from a low month (June)
- Queue spill back effects not represented adequately
- **410 car trips** in/out per hour will see increases of over 20% on Macquarie Street
- Site is somewhat distant from Town Centre and will encourage 2 car trips in town (rather than 1 currently) – not in line with TfNSW movement & place principles
- Traffic performance to LoS C on year of opening not representative of traffic conditions due to other friction effects
- No form of parking management and how to avoid basement car park being over capacity (and blocking double roundabout)
- With congestion on Macquarie Street set to increase no assessment of the relief route via Springwood Avenue has been included in DA

Model Results (SAT 11am - 12pm)

With development



Approaching to the end of the simulation (12pm) the Eastbound traffic queue extends from Hawkesbury Road towards Bent Street, approximately **500 metres**.

The traffic queueing on Macquarie Road also results in blockage at Woolworths northern access.

Overall, it results in a total of **70 unreleased vehicles** in the network, comprising of the Macquarie Road westbound traffic (i.e queues extend back towards highway)